

1207

HAMILTON PALACE

Hamilton, Lanarkshire, Scotland

The Remaining Contents

OF

THE PALACE

On WEDNESDAY, NOVEMBER 12, 1919

AND TWO FOLLOWING DAYS

ILLUSTRATED CATALOGUE

05-09 & 1806

HAMILTON PALACE

Hamilton, Lanarkshire, Scotland

CATALOGUE

OF

The Remaining Contents

OF

THE PALACE

INCLUDING

WOODWORK AND FITTINGS

WHICH (by Order of the Trustees)

Will be Sold by Auction by

MESSRS. CHRISTIE, MANSON & WOODS

(L. HANNEN, C.B.E., W. B. ANDERSON, AND CAPT. V. C. W. AGNEW)

ON THE PREMISES AS ABOVE

On WEDNESDAY, NOVEMBER 12, 1919

AND TWO FOLLOWING DAYS

AT ONE O'CLOCK PRECISELY

May be viewed Two Days preceding on the premises as above, and Catalogues had at Messrs. CHRISTIE, MANSON & WOODS' Offices, 8 King Street, St. James's Square, London, S.W.1, and of Mr. HUGH C. WEBSTER, Hamilton Estate Office, Hamilton, Lanarkshire.



CONDITIONS OF SALE.

- I. THE highest Bidder to be the Buyer; and if any dispute arise between two or more Bidders, the Lot so in dispute shall be immediately put up again and re-sold.
- II. No person to advance less than 1s.; above Five Pounds, 5s.; and so on in proportion.
- III. In the case of Lots upon which there is a reserve, the Auctioneer shall have the right to bid on behalf of the Seller.
- IV. The purchasers to give in their Names and Places of Abode, and to pay down 5s. in the Pound, or more, in part of payment, or the whole of the Purchase-Money, *if required*; in default of which, the Lot or Lots so purchased to be immediately put up again and re-sold.
- V. The Lots to be taken away and paid for, whether genuine and authentic or not, with all faults and errors of description, at the Buyer's expense and risk, within Two Days from the Sale; Messrs. CHRISTIE, MANSON AND WOODS not being responsible for the correct description, genuineness, or authenticity of, or any fault or defect in, any Lot, and making no warranty whatever.
- VI. To prevent inaccuracy in delivery, and inconvenience in the settlement of the Purchases, no Lot can on any account be removed during the time of Sale; and the remainder of the Purchase-Money must absolutely be paid on the delivery.
- VII. Upon failure of complying with the above Conditions, the Money deposited in part of payment shall be forfeited; all Lots un-cleared within the time aforesaid shall be re-sold by public or private Sale, and the deficiency (if any) attending such re-sale shall be made good by the defaulter at this Sale.

A Brief History of Hamilton Palace.

By H. AVRAY TIPPING.

CASTLE, Palace, House, Palace—such are the different names successively attributed to the often rebuilt and altered habitation near the Lanarkshire town of Hamilton that has been a chief dwelling-place of the Hamiltons from mediæval to present days. Vast additions made a century ago transformed it into the huge pile needing a stateliness of householding and a multiplicity of retinue that have become things of yesterday. Moreover, its situation and condition join with its size in procuring its condemnation by general consent. It is in the midst of the Lanarkshire coal field, and the numerous and proximate pits not only destroy its amenity, but actually threaten its structure.

And so Hamilton Palace, with its history and its traditions, its splendour and its treasures, is to pass away. The first blow, indeed, was struck thirty-seven years ago when masses of its most rare and costly contents were dispersed, causing the *virtuoso* pulse to throb lustily and adding a still unforgotten page to the annals of Christie's saleroom. Yet how much remained over, how fine were still the decorations and the furnishings has been revealed by last week's important sales in King's Street, and by this Catalogue, which includes the splendid decorations of the seventeenth and eighteenth century rooms.

To Walter FitzGilbert de Hamiltone, Bruce granted "the lands of Machane" soon after he won the Battle of Bannockburn in 1314. In the fifteenth century King James II. of Scotland made James Hamilton, fifth in descent from FitzWalter, a baron, and erected his Lanarkshire lands into "one free lordship to be denominated in future the lordship of Hamilton." This first Lord Hamilton wedded James II.'s eldest daughter, Mary, widow to an Earl of Arran, and carrying the Island and the Earldom to her Hamilton son. It was as Earl of Arran that her grandson held the regency during the days of Queen Mary's childhood. During that period Henri II. of France made him Duke of Chatelherault, and it was probably then that his home at the edge of Hamilton town came to be called Palace.

Evil times, however, now fell both upon the house and its owner. The house was more than once sacked and its lord exiled during the civil wars that never ceased till Mary's head fell at Fotheringay in 1587. Two years earlier, Lord John Hamilton—his elder brother having long before lost his reason—entered Scotland in strength, seized Stirling Castle, where King James VII. was, and imposed upon him forgiveness and the restoration of lands for himself and his fellow-exiles. Thereupon he set to work to repair the devastated estate, and rebuilt the ruined house. A stone, dated 1591, is preserved as the only visible remnant of the "Castle" he then erected, and where he often entertained the King, who had become his firm friend and created him Marquess of Hamilton in 1599. His two grandsons were successively Dukes of Hamilton, and died fighting for the Stuarts. The elder one's daughter Anne became

heiress to the duchy and estates, and in 1657 married William, a younger son of the Marquess of Douglas. On his wife's petition in 1660 the restored Charles made him Duke of Hamilton for life, and thus he ranks as the third Duke. Thereupon he devoted himself to reviving the Hamilton fortunes by a prudent administration and improvement of the restored estates. Until that was done he took little part in public affairs, and it was later still before he was in a position to rebuild the Castle and rechristen it Hamilton House.

As the cypher W.A. for Duke William and Duchess Anne, appears repeatedly on the south front, it is clear that it dates before the former's death in 1694, but how much earlier we can only conjecture from the character of the work. The richly decorated oak rooms, illustrated in this Catalogue, have much resemblance to those at Holyrood Palace, dating from 1672-9, but are a little later in character, so that the Holyrood joiners and carvers may well have passed on to Hamilton. The architect was certainly James Smith, who is called, in the *Vitruvius Britannicus*, "the most experienced architect in Scotland," and whose drawing, representing the south front as it still is, was published in the *Vitruvius Scoticus* of William Adam. The oak rooms, now offered for sale, occupy most of the first floor of James Smith's building, but here also are a set of rooms showing a somewhat different treatment and date. They form the Duchess's suite and are all included in Lot 557. They were probably decorated under James Smith's superintendence for the widowed Duchess Anne, who did not die till 1716. The swags of the boudoir mantelpiece and of the dressing-room overdoors are almost identical with those under two of the upper windows of the central pediment of the south front, while under the third are the crossed palm branches which also occur on the bedroom overmantel. There is strong resemblance also between the scroll and upright leafage of the friezes of various outside windows and the cornice friezes of the rooms, while the shell, which recurs persistently within doors, is also used in the niches that replace the central windows on the first floor at the ends of the wings. The details, therefore, are in favour of Smith as a designer, and some time in the reign of Queen Anne as a date, although they do not clearly contradict the tradition that William Adam, and not James Smith, was responsible for their decoration. If so, the date must be postponed till after the fifth Duke came of age in 1724. He it was who some years later commissioned William Adam, father of the more renowned Robert, to design a new north front, which, probably owing to this Duke's death in 1743, was not then begun, nor was any material change made by his eighteenth century successors. But with the tenth Duke, who succeeded in 1819, came a revival of the scheme. His leanings were towards sumptuous building and art collecting, and, moreover, he had a very high opinion of his importance. "He firmly believed that as the descendant of the regent Arran he was the true heir to the throne of Scotland." Once more the term Palace became appropriate, and the building must be made worthy of the dweller. "About 1825" is the date given for the commencement of the operations. Although a Glasgow architect named Hamilton was employed, the position of designer in chief was no doubt assumed by the Duke himself, who took as his model the scheme prepared for his grandfather by William Adam. The leading features had been a great central portico leading into a vast and lofty hall. With some alterations these features were adopted by the tenth Duke, and are the

most successful and dignified portions of his additions to the Palace. But in place of Adam's somewhat numerous and unimportant staircases, he used a large space next to the hall for one of great ampleness and costly material. It is entirely constructed of his favourite black marble. The treads are boldly moulded underneath and the balusters are carved with acanthus-leaf. The gallery, to which the two flights lead and which connects the stone hall with the eastern drawing-room, is likewise of marble, but is supported by caryatids thus described and valued in the Inventory for fire insurance :—

The 2 Immense Bronze Colossal Figures and Caryatides
with Cyphers and Panels in do do £3000 0 0

It is a thousand pities that so great and historic a house should disappear. That being inevitable, one must hope for the preservation and adequate use of the splendid materials and choice fittings. Within and without the Palace offers us of the best that the seventeenth, eighteenth and nineteenth centuries produced, and the present dispersal yields a very unusual opportunity of acquiring sumptuous examples of all three periods in the finest possible state of preservation.

CATALOGUE.

First Day's Sale.

On WEDNESDAY, NOVEMBER 12, 1919,

AT ONE O'CLOCK PRECISELY.

PORCELAIN AND POTTERY.

- 1 Nine Nankin octagonal dishes, variously painted with river scenes, flowers, &c.
- 2 A pair of Nankin oval dishes, painted with peonies—18½ *in. wide*; a dish, with lotos—15½ *in. wide*; a pear-shaped bottle, with foliage and emblems—10 *in. high*; and two double sauce-boats, painted with flowers
- 3 Thirteen Chinese plates, variously painted and enamelled; and four fan-shaped tea-caddies, painted with flowers in red and gold
- 4 A Chinese famille-verte ewer, enamelled with panels of flowers and rocks—7 *in. high*—*Kang-He*
- 5 A Chinese flat-shaped vase and cover, enamelled with panels of figures in painted blue borders, on a gilt scroll groundwork—14 *in. high*—*Kien-Lung*
- 6 A Chinese saucer, modelled with flowers in relief and enamelled, mounted on metal-gilt stand; two cups and saucers, modelled with lotos flowers, and enamelled; an enamelled red-ware teapot; and eight other small pieces
- 7 A Chinese famille-verte dish, enamelled with flowering plants—10½ *in. diam.*; and one, with flowers, rocks and butterflies—11 *in. diam.*—*Kang-He*
- 8 Two Nankin jars and covers, painted with flowers, rock and emblems—19 *in. high*
- 9 A pair of Chinese liver-coloured bottles, mounted with metal-gilt as lamps—13 *in. high*; and a brown crackle vase, with bronzed bands—22 *in. high*

- 10 Thirteen Japanese dishes, with turtles, in blue on floral ground; and eighteen dishes, decorated in the Japanese taste
- 11 Two old Worcester dishes, painted with, flowers in the Oriental taste, and with dark blue bands— $7\frac{1}{4}$ in. diam.
- 12 Three old Worcester plates, painted with flower-sprays, and modelled with rosebuds in relief— $7\frac{1}{2}$ in. diam.
- 13 Three ditto, painted with insects, and modelled with rosebuds, and with turquoise edges—8 in. diam.
- 14 An old Worcester plate, painted with fruit and flowers in shaped dark blue border gilt with cornucopie of flowers
- 16 A Worcester plate, by Barr, Flight and Barr, decorated with Chinese landscapes in white and gold on pink ground, with foliage round the border on red ground; and twelve other plates, decorated with foliage in red and gold
- 17 Two Church-Gresley plates, painted with flowers and yellow panels; and three plates and a saucer, painted with rosebuds and red panels
- 18 Two Derby plates, with Classical ornament in dark green and gold on yellow ground; and six Worcester plates, variously decorated with figures and Classical ornament
- 19 Eleven Worcester plates, variously decorated with foliage in white and gold
- 20 A Worcester plate, painted with landscapes, and gilt with foliage round the border; another, by Flight and Barr, with salmon borders; and four others
- 21 A Worcester plate, by Barr, Flight and Barr, with marbled-grey ground and gilt key-pattern border; two plates, with foliage and key pattern in lusted mauve and gold; and two ditto, with Classical ornament in lusted mauve, white and gold
- 22 A Derby plate, painted with flower-sprays in salmon and gold trellis border; and a plate, with a bouquet of flowers in the centre, and red and gold chequer pattern round the border
- 23 A pair of Worcester plates, painted with caryatid figures, arabesques and yellow bands; and three others, painted with flowers, and partly gilt

- 24 A Worcester plate, painted with a bouquet of flowers, and the border gilt with foliage; another, with flower-sprays and gilt chequer border; a plate, with pink rosebuds, in panels on red ground; and one, with flower-sprays on gilt scrollwork
- 25 Three Worcester plates, decorated with wreaths and sprays of flowers in white and pale green on gold ground
- 26 Nine Worcester plates, variously decorated with foliage, arabesques, &c., in colours and gold
- 2 Eight Minton plates, with Cupids in relief round the borders, on blue, green and brown grounds; and four old English plates, decorated with foliage, &c., chiefly in blue
- 30 Three Leeds plates, decorated with flowers in colours on a yellow and green ground; with pierced borders; a plate, nearly similar; and three salt-glaze circular baskets, with pierced borders—7 in. diam.
- 31 A Spode inkstand, with red ground; a white and gold campana-shaped vase; and three sauce-boats, stands and two covers
- 32 Four Derby biscuit vases, modelled with festoons of flowers in relief; a Copeland biscuit bottle, with chains and a vine-branch in relief; and a French biscuit figure
- 33 Three porcelain spill-vases, painted with flowers in green borders—9 in. and 7 in. high; two spill-vases, with crimson ground; and two scent-bottles and stoppers, with flowers on yellow and blue ground
- 34 Seventeen Paris porcelain dessert-baskets, of various shapes, white and gold
- 36 Fourteen Worcester cups and thirteen saucers, variously decorated with Classical figures and trophies, in the Italian taste, on white and coloured grounds
- 37 A Worcester coffee-cup and saucer, decorated with flowers and foliage in colours, in the Oriental taste; two others, nearly similar; eight cups and saucers, variously decorated; and a Derby saucer, with rosebuds.

- 38 A Paris plate, painted with lovers, in gilt arabesque border ; one, painted with a Nymph and Cupid, and gilt with honeysuckle ornament; and a plate, with Cupid and Psyche, in brown border
- 39 A Paris plate, by Dill, painted with a shepherdess, and gilt with honeysuckle ornament; and one, painted with children, in gilt border
- 40 A plate, by Dastin, painted with swans in salmon and mauve border; four plates, with Classical ornament; two plates, with arabesque borders; and six others
- 41 Four Paris plates, variously decorated with Classical figures in gilt borders
- 42 A Paris plate, by Edward Honor, painted with a rose in pink border, gilt with the Hamilton monogram, coronet and fleur-de-lys
- 43 A Paris plate, by Dastin, painted with flowers and festoons and a mauve band; a plate, with violets and convolvuli in gilt border; and one, with trophies on maroon border
- 44 A pair of Paris plates, painted with named birds, in brown borders; and one, with a Chinese pheasant, in white and gold borders
- 45 Two Paris plates, the borders decorated with Classical and Chinese ornament; another, with mauve and yellow borders; another, with a mauve border; and one, painted with birds and branches
- 46 A Paris plate, painted with rosebuds and forget-me-nots; and six others, variously decorated
- 47 Nineteen Paris plates, by Boyer, painted with wreaths of flowers on crimson ground
- 48 Twelve Courtille plates, painted with cornflowers; and nineteen Minton Sèvres-pattern plates, with flower-sprays and the initial M in narrow borders
- 49 Ten Paris plates, with gold centres, and blue and gold borders

- 50 A French porcelain trembleuse cup, cover and saucer, with a mother and child, in gilt borders; a pair of cups and saucers, with green and gold borders; a cup and saucer, in imitation of mosaic-work; and three other cups and seven saucers
- 51 Part of a Paris tea service, by Arhault, with decoration in blue and white, consisting of four sugar-basins and covers, a cream-jug, three saucers and five plates; and two Paris bowls, painted with panels of flowers, pink ribands and gilt foliage
- 52 Four Dresden tea-cups and saucers, painted with Cupids on marbled blue and gold ground; a Coalport bowl, with birds on marbled blue and gold ground; and four Dresden cups and saucers, with panels of figures on marbled pink and gold ground
- 53 A pair of porcelain bottles, painted with Amorini on black ground, and mounted with or-molu as lamps—18 in. high
- 55 Thirteen Paris tea-cups and twelve saucers, by Boyer, painted with sporting subjects and animals, and gilt with festoons; and a pair of ice-pails, covers and liners, by the Same, painted with wreaths of flowers
- 57 Part of a porcelain service, painted with arms in colours and gold, consisting of a cream-jug, thirty cups and saucers, eight egg-cups and a small bowl
- 58 Ten Berlin plates, painted with garden scenes, in pierced borders; a silvered French porcelain bottle, of Classical shape; a Berlin cup and saucer; six Limoges white cups and saucers; and various other pieces
- 59 A Paris oval jardinière, and two circular ditto, by Boyer, painted with flowers in gilt scroll borders; a pair of Jacob Petit beakers, painted with flowers and gilt with arabesques; and five pottery jardinières, decorated with flowers
- 60 A ewer, decorated with Amorini in biscuit on cream ground; a shell-shaped dish, en suite; a pottery ewer, with Diana and Actæon on blue and green ground; and a bottle, with portraits on dark blue ground

- 61 A green crackle circular jardinière; three pottery ditto, painted with flowers; a pair of ditto, with daffodils on green ground; and three pairs of flower-pots and stands, with branches in white on apple-green ground.
- 62 Four pottery square flower-pots and stands, with branches in white on blue ground—5 in. wide; five flower-pots and stands, green and white; six pottery jardinières; and a pair of vases, painted with flowers.
- 63 Twelve Staffordshire agate ware plates, decorated with trellis-work and gadrooning.
- 64 Ten French faience plates, with flowers in pink borders; six other plates and a tazza, with mottled ground; thirty-one French faience plates and two dishes, with arms in blue; and nine plates, with flower-sprays in blue.
- 65 Nine Wedgwood plates, with flowers in blue and green; six fan-shaped dishes and one cover; five pottery plates; and four Staffordshire blue and white fan-shaped dishes, one cover, four cheese-dishes, two soup-tureens and one cover, five vegetable-dishes and six covers, four covers for sauce-tureens, and five strainers.
- 66 Three pottery dishes, with marbled decoration; a Lambeth small plate, painted with Adam and Eve; and a leaf-shaped dish.
- 67 A Marseilles oval dish, painted with a bird and flowers in polychrome, in the Chinese taste; two other French faience dishes, five plates and two sauce-tureens; and a soup-tureen with shell-shaped lid.
- 68 Forty-four French faience plates, with flowers in colours; and three faience sconces, painted with pastoral scenes.
- 69 A Doulton ware dish, with decoration in blue; five iron-stone dishes; a Staffordshire figure of a cow; and a Wedgwood black basalt service of nine pieces.
- 70 Five Wedgwood copies of Etruscan vases, with figures in red on black ground; and a copy of the Portland Vase.

OBJECTS OF ART.

- 71 Two Chinese soap-stone bowls, carved with branches; a small ditto figure and stand; and one other
- 72 A figure of an elephant, carved in black marble, dated 1850—
10½ in. high
- 73 A bronze figure of a negro, supporting an or-molu barrel; a Japanese lacquer plaque; two bronze figures; and three other pieces
- 74 A bronze bust of Dugald Stewart, by Samuel Joseph—*12 in. high*; a bronze hand; and a bronze medallion portrait of a lady, by C. S. Sayer, 1830
- 75 A small bronze bust of Napoleon III., by E. Fremiet; three ditto figures of Louis XVIII.; one other small bronze figure; two bronze paper-weights; a bronze lamp; two spill-vases; and a casket
- 76 A bronze figure of a hare; a group of a frog and shell; a Chinese small bronze korō; and a Persian pottery narghile, with engraved metal mounts
- 77 A pair of figures of lionesses, carved in white marble—*5½ in. high*
- 78 A black marble model of a Roman sarcophagus—*4½ in. high*; six red marble models of cisterns; a hexagonal lava dish; two yellow marble columns; and four other pieces
- 79 An Italian crucifix, of metal-gilt and blue glass, in imitation of lapis-lazuli; and four candlesticks, en suite
- 80 Two Chinese soap-stone figures; three ditto carvings of fruit; two Japanese carved wood figures; a spill-vase, carved with lotos; a carved wood jar; and a Japanese lacquer shrine, containing a figure of a deity
- 81 Two black pottery bottles and stoppers—*10 in. high*; a cocoanut cup, on foot; a lava cup and cover; two opium-pipes, in shagreen case; and four other pieces
- 82 A porcelain plaque, with map of Scotland; fifteen ivory serviette-rings; and eleven other pieces
- 83 Two models of buildings, carved in cork

- 84 Two terra-cotta figures of men— $9\frac{1}{2}$ *in. high*; three figures of boys and dogs, on marble plinths; a group of a dog and puppies; a red marble figure of a boy and dog; and a figure of a monkey
- 85 A wood tazza, inlaid, with playing-cards; a carved wood model of a font; and nine wooden ladles
- 86 A large double gourd; and thirteen other pieces
- 87 A red ware octagonal vase—16 *in. high*; two ditto tea-pots; a sang-de-bœuf tea-pot; and nine other small pieces
- 88 Two Empire cut-glass baskets, with metal-gilt handles; a bronze and metal-gilt figure of a negro; an Empire or-molu stand; a ditto model of a chair; a pair of or-molu candlesticks; and a green agate bowl
- 89 Four Bohemian ruby glass vases; two blue glass ditto; and various small specimens of coloured glass
- 90 A horn, with plated mounts; a wood scent-case, containing glass bottles; and numerous other small pieces
- 91 A wax relief of a lady and gentleman, with a vase of flowers, in ebonised case; and an ivory relief of Martin Luther
- 92 Various plaster casts of gems and medallion portraits; and three plaster casts of the Alhambra
- 93 A Boulle stand, mounted with or-molu lions'-masks—6 *in. wide*; and a Boulle clock-bracket, mounted with or-molu— $10\frac{1}{2}$ *in. wide*
- 96 Two small cups, formed of nuts, mounted with silver handles and feet— $3\frac{1}{2}$ *in. high*—17th Century
- 97 A tazza, of veined brown marble— $7\frac{1}{4}$ *in. diam.*; a painted lapis-lazuli plaque, in ebonised frame; a circular malachite plaque—13 *in. diam.*; a plaster bust; two carved cedar-wood caskets; and a pair of ditto vases, carved with vine branches
- 98 A pair of hands and two feet, sculptured in white marble
- 99 An Antique torso, carved in white marble—10 *in. high*—on grey marble pedestal

- 100 An Italian ebony work-box, inlaid with sprays of flowers, a shield and gryphons in engraved silver—15 *in. wide*
- 101 A PEWTER SERVICE, consisting of twenty oval dishes, sixteen circular dishes, and one hundred and fourteen plates, and four other pieces
- 102 A plaster figure of a lady—9 *in. high*—glass shade and stand; three pairs of porcelain candlesticks; and a tobacco-jar
- 103 A Greco-Russian triptych, painted with Saints—17 *in. high*
- 105 An old English gold memorial ring, with a portrait in border of diamonds; and an enamelled gold memorial ring
- 106 Four plated oval jardinières, with scalloped borders and lion's-mask handles—18 *in. wide*
- 107 A plated oval venison-dish—24 *in. wide*; four oval heaters; six fish-strainers; a knife-rest; and an engraved jug
- 109 A toilet-mirror, in silver frame with pierced foliage borders—16 *in. wide*
- 110 Two oak panels, carved with Renaissance ornament; two ditto, with medallion heads and foliage; and a walnut-wood inkstand
- 111 A miniature, on paper, of Lady Anne Hamilton, afterwards Countess of Southesk, in ebonised frame; and a pencil portrait of a lady, in square black frame
- 112 A pencil portrait of a lady, in square ebonised frame; another, of the eighth Duke of Hamilton, in gilt frame; and three other portraits
- 113 A miniature of a boy, by E. Chalon, R.A., in or-molu frame; and a miniature of Lady Suzanne Hamilton—*signed M. GASEL*—in wood frame
- 114 A miniature of Lord Byron, by J. Homes, in gilt frame; a miniature, in oils, in gilt frame; and four others
- 115 An oval gilt frame, carved with flowers, and mounted with four miniatures; two silhouette portraits; and a silhouette portrait of a gentleman, in square black frame
- 117 A pair of wax portraits of a lady and gentleman, in glazed wood frames; and nine wax and other medallion portraits

- 119 A portrait of a gentleman, wearing blue coat and black hat—30 in. by 25 in.—unframed; and Salome—58 in. by 41 in.
- 120 A portrait, in oils, of Alexander, Tenth Duke of Hamilton; and a portrait of Princess Marie of Baden
- 121 Three Italian landscapes, in oils; and two others
- 122 A view of a mountainous landscape, in oils; and four others
- 123 A water-colour drawing of an Italian coast scene—dated 1852; and an Italian lake scene, by C. Bossoli, 1856
- 124 A water-colour drawing of a palace, by J. Murphy, 1879; and one of a summer-house, by the Same
- 125 A water-colour drawing of an Italian coast scene, by H. Garin, 1858; and three others
- 126 A water-colour drawing of Ashton Hall; and three other views of castles
- 127 A pencil drawing of the Fortune-teller, circular, in gilt frame
- 128 Two water-colour portraits of the late Duke of Hamilton, and Lady Mary Hamilton, by T. Horrick, 1835
- 129 A water-colour drawing of an Albanian; five pencil portraits, and two drawings of Italian landscapes, in pencil and colour—dated 1854
- 130 Sundry engravings and photographs
- 131 A mezzotint of the Earl of Dunmore, after J. Lonsdale; and portraits of the Tenth Duke of Hamilton and the Marquis of Bristol
- 132 A portrait of the King of Poland; the Grand Duchess Stephanie of Baden; and four others
- 133 Two engraved portraits of Marie, Princess of Baden; and five others
- 134 An engraving of the Virgin and Child; another, of a landscape; three others; and fourteen photographs—framed
- 135 An engraving of Napoleon III. and his troops; Alexander Duke of Hamilton; and Suzan, Duchess of Hamilton
- 136 A drawing, in sepia, of Hamilton Palace, with a wedding procession; and thirteen prints and photographs
- 137 Sunset at sea, in oils; and nine prints and photographs

- 138 Ten prints, depicting the Battle of the Armada, &c., by John Pine, 1739—framed; and eight others
- 138A Twelve prints, in maple frames.
- 138B A print of the returned Crimean soldier; the Blacksmith's Shop; and two others
- 138C A silhouette of four ladies; three others; nine prints; and two oblong plaster casts
- 138D An etching; and thirty-seven prints, various

ENTRANCE HALL.

- 139 Three deal tables, with marble tops
- 140 A portrait of a lady, in oils—44 in. by 32 in.; two pictures of horses—23 in. by 30 in.; and three others
- 141 A picture of Cain and Abel—47 in. by 57 in.; and five others
- 142 A picture of the Virgin and Child—23 in. by 19½ in.; and nine others
- 143 A white marble pedestal, sculptured with Classical figures, and surmounted by an alabaster model of a turret—50 in. high
- 144 Four plaster statuettes; and two busts
- 145 Four columns, of veined black and white marble—8 ft. 3 in. high
- 146 Two busts of men, sculptured in white marble—*signed* PARK, FECIT 1835—life-size
- 147 A pair of large cylindrical granite pedestals—4 ft. 3 in. high
- 148 AN EGYPTIAN SARCOPHAGUS, of pink granite, sculptured with a recumbent figure, and incised with hieroglyphics—7 ft. 6 in. long, 4 ft. high
- 148A Six glass and metal gilt lanterns, chased with rams' heads, fitted for gas

OLD DINING ROOM.

- 149 A Chippendale mahogany oval dining-table, on club feet—
6 *ft. wide*
- 150 A pair of Chippendale mahogany tripod-firescreens, with
square banners
- 152 Two pairs of crimson baize curtains, with cornice and
holders; and a table-cover
- 153 A steel and wire fender—5 *ft. wide*; a set of steel fire-
implements; and a brass gas pendant
- 154 NINE CHIPPENDALE MAHOGANY CHAIRS, AND TWO ARM-
CHAIRS, with pierced ladder-pattern backs

GILT STAIRCASE HALL.

- 155 A pair of Georgian side-tables, carved with foliage and
gadrooning painted white and gold, surmounted by slabs
of veined black and white marble—6 *ft. 9 in. wide*
- 156 Two busts of children, sculptured in white marble, by L.
MacDonald, *Rome*, 1850—life-size
- 157 A bust of a girl, sculptured in white marble—19 *in. high*
- 158 A plaster statue of Minerva—6 *ft. 9 in. high*—on painted
pedestal; and four plaster busts
- 159 Two glazed cases of stuffed birds; and various other stuffed
birds

BACHELOR'S CORRIDOR, GROUND FLOOR.

- 160 A mahogany sarcophagus-shaped linen chest—4 *ft. wide*
- 161 A length of matting; three door-mats; and the red ground
matting on first floor

BEDROOMS 1 AND 2.

- 162 The green ground Brussels carpet as laid; a hearth-rug;
a fender and steel fire-implements; and a bronzed gas-
pendant

BEDROOM 3 AND DRESSING-ROOM ADJOINING.

- 163 A pine single bedstead, a couch, two circular tables, and a wash-stand
- 167 A steel and wire fender—4 *ft. 6 in. wide*; a set of fire implements; a pair of green curtains; and two gasoliers
- 168 A pine canopied bedstead; a circular table; a toilet-glass; a couch; a towel-horse; and a wash-stand
- 169 Two pairs of bronzed gasoliers, for three lights each

BUSINESS ROOM.

- 170 A book-case, with latticework front—10 *ft. high*, 13 *ft. wide*; and two smaller ditto
- 171 A steel and wire fender—4 *ft. 4 in. wide*; a set of steel fire implements; a bronzed gasolier; a plaster bust; and six mahogany hat-stands

THE SOUTH CORRIDOR.

- 177 The red ground Brussels carpet, as laid to corridor

BILLIARD ROOM.

- 178 A full-size billiard-table, by Burroughs and Watts, in oak frame; a set of balls, cues and marker; and extra balls and cues
- 179 Three oak settees; and two window-seats
- 181 The carpet as laid; four mats; a gilt fire-screen; and a stained over-mantel
- 182 A mahogany square dining-table, on octagonal pillar—4 *ft. 3 in. wide*

BEDROOM 3 AND DRESSING-ROOM ADJOINING.

- 163 A pine single bedstead, a couch, two circular tables, and a wash-stand
- 167 A steel and wire fender—4 *ft. 6 in. wide*; a set of fire implements; a pair of green curtains; and two gasoliers
- 168 A pine canopied bedstead; a circular table; a toilet-glass; a couch; a towel-horse; and a wash-stand
- 169 Two pairs of bronzed gasoliers, for three lights each

BUSINESS ROOM.

- 170 A book-case, with latticework front—10 *ft. high*, 13 *ft. wide*; and two smaller ditto
- 171 A steel and wire fender—4 *ft. 4 in. wide*; a set of steel fire implements; a bronzed gasolier; a plaster bust; and six mahogany hat-stands

THE SOUTH CORRIDOR.

- 177 The red ground Brussels carpet, as laid to corridor

BILLIARD ROOM.

- 178 A full-size billiard-table, by Burroughs and Watts, in oak frame; a set of balls, cues and marker; and extra balls and cues
- 179 Three oak settees; and two window-seats
- 181 The carpet as laid; four mats; a gilt fire-screen; and a stained over-mantel
- 182 A mahogany square dining-table, on octagonal pillar—4 *ft. 3 in. wide*

- 183 An Empire commode, with folding doors in the front, decorated with lacquer panels, and surmounted by a green marble slab—5 ft. 3 in. wide
- 184 A mirror, in spiral oak frame—3 ft. 9 in. wide; a fire-screen; and a mahogany side-table—5 ft. 6 in. wide

SMOKING ROOM.

- 185 A CHIPPENDALE GILT-WOOD CENTRE TABLE, elaborately carved with festoons of flowers, grapes and scrollwork, surmounted by a black marble slab—7 ft. 2 in. long
- 187 A deal table; a set of croquet mallets and balls; and four gasoliers

End of the First Day's Sale

Second Day's Sale.

On THURSDAY, NOVEMBER 13, 1919,

AT ONE O'CLOCK PRECISELY.

GLASS.

- 188 A set of three shaped bowls, with roped handles
- 189 Six cut-glass decanters and stoppers, decorated with bands of diamond ornament and fluting
- 190 Ten water-bottles, en suite
- 191 Nineteen large goblets, en suite
- 192 Eighteen wine-glasses, en suite
- 193 Thirteen finger-bowls, en suite
- 194 Four cut-glass oval saltcellars, with fluted feet; six circular dessert-stands; and two oval dish-stands
- 195 Six octagonal baskets, and six ditto dishes, cut with star ornament in the centres, and scalloped borders
- 199 A cut-glass oval sugar-basin; a small oval dish; two cream-jugs; and two covers
- 200 Five oval cut-glass dishes, decorated with diamond pattern
- 201 Two cut-glass water-jugs, decorated with fluting—10 *in. high*; a pair of ditto, with diamond ornament—9½ *in. high*; and a pair of cut-glass jugs and stoppers
- 202 A pair of oval cut-glass dishes, with borders of diamond ornament—10 *in. wide*

- 204 An old English bell goblet, with spirally twisted stem— $8\frac{1}{4}$ in. high; and a large goblet— $9\frac{1}{2}$ in. high, 7 in. diam. of lip
- 205 Forty-two green hock-glasses
- 206 Ten green glass goblets, with V-shaped bowls; and fourteen glass goblets, with deep-moulded cups
- 207 A spirally fluted ruby and white service, consisting of five decanters and stoppers, seventeen champagne-glasses, and seventeen port-glasses
- 208 A frosted glass service, gilt with a coronet and monogram, consisting of two decanters and stoppers, two water-jugs, twelve wine-glasses, thirty-four tumblers, sixteen finger-bowls, and thirty-six bottles
- 209 A service, enamelled and gilt with flower-sprays and foliage, consisting of—
 A two-tier centrepiece
 A pair of centrepieces
 A pair of vases and covers
 Four smaller ditto
 Twelve tazze
 Two bowls
 Four bowls on feet
 Two dishes
 Fifty plates
 Fifty small plates
 Twenty-six finger-bowls
 Four water-jugs
 Four decanters
 Forty-five wine-glasses
 Fourteen liqueur-glasses
 Twenty-two tumblers
- 210 Two large decanters, engraved with the Hamilton Arms; and fifty-four wine-glasses, gilt with the monogram and coronet
- 211 Four decanters, engraved with fleur-de-lys; an engraved water-jug; a pair of decanters, with cords in relief; and a Venetian cover
- 212 An engraved decanter and three goblets, engraved with birds and foliage
- 213 Two bottles and two goblets, gilt with festoons; and a German ruby glass goblet, engraved with the Hamilton Arms

OR-MOLU, Etc.

- 214 Twelve metal-gilt candlesticks, of Italian design, engraved with arabesques
- 215 Four ditto, the bases pierced with scrolls
- 216 Four or-molu candlesticks, of Louis XV. design, chased with shells and scrolls—11 *in. high*
- 217 A pair of ditto, engraved with foliage and chased with scrolls—11 *in. high*; and a pair of ditto, chased with shells, foliage and fluting
- 218 A pair of or-molu candlesticks, of Louis XVI. design, chased with foliage and fluting
- 219 A pair of or-molu candelabra, chased with shells, and with foliage branches for two lights each—15½ *in. high*
- 220 A pair of ditto, with figures in high relief at the base, and scroll branches for three lights each—14½ *in. high*
- 221 An or-molu inkstand, surmounted by a figure of a boy and goat; an or-molu hand-candlestick; and two frames for miniatures, with laurel-wreath borders
- 222 Four Louis XVI. or-molu candlesticks, chased with fluting, and riband borders—10½ *in. high*
- 223 Eight or-molu candlesticks, chased with lions'-masks and foliage
- 224 A metal-gilt reading-lamp, with branches for six lights, and shade—27 *in. high*
- 225 Six Empire or-molu candlesticks, with fluted stems, the borders and circular plinths chased with foliage and grapes—15 *in. high*
- 226 A pair of smaller ditto, with fluted stems, the plinths chased with acanthus leaves—11½ *in. high*; and a pair of ditto, chased with fluting and trelliswork—11 *in. high*
- 227 AN OR-MOLU DESSERT SERVICE, by Thomière, à Paris, chased with winged caryatid figures, foliage and Classical ornament, consisting of—
 - A pair of two-tier stands, with glass dishes—19½ *in. high*
 - A pair of ditto—14 *in. high*
 - Four dessert-baskets
 - Four stands
- 228 A Louis XIV. or-molu candelabrum, with branches for three lights, and octagonal plinth chased with rosettes and foliage—14 *in. high*

- 229 Four Empire or-molu candelabra, the stems chased with figures of Nymphs, and with branches for four lights each, chased with foliage and serpents—*25½ in. high*
- 230 A toilet-mirror, in metal-gilt frame, embossed and chased with shells and scrollwork—*46 in. wide*; and an or-molu snuffer-tray and pair of snuffers
- 232 Four old English candlesticks, with wood stems and metal-gilt foliage nozzles—*9½ in. high*; and four footmen's staves, with plated mounts

FIRST-FLOOR LANDING.

- 234 A pair of Italian painted wood figures of negroes—*32 in. high*
- 235 A pair of candelabra, of turquoise glass, with or-molu branches for eight lights each—*45 in. high*
- 236 A chequer-pattern carpet, as laid

CORRIDOR, FIRST FLOOR.

- 237 A pair of Italian carved and painted wood figures of a negro and negress—*6 ft. 5 in. high*
- 238 The red ground carpet, as laid to corridor, dressing-room, and bath-room; two pine window-seats, with green tops; and a pair of red curtains

DRESSING ROOM.

- 239 A mahogany winged wardrobe—*8 ft. 3 in. high, 9 ft. 9 in. wide*
- 240 A painted iron bedstead and bedding
- 241 A mahogany toilet-glass; a towel-horse; an enamelled hip bath; and a wire fender and set of fire implements
- 242 Three plaster busts of ladies; and two others

THE DUCHESS'S BOUDOIR.

- 244 Two Adam gilt tables, with fluted frieze and legs carved with rosettes, the tops formed of slabs of veined brown marble with white marble borders—36 *in. wide*
- 245 A gilt console-table, with wood top in imitation of marble—6 *ft. wide*
- 246 A pair of Italian torchères, carved with figures of negroes and painted in colours—37 *in. high*
- 247 A gilt show-cabinet, with glazed ends and door in the front, surmounted by a white marble slab—45 *in. high*
- 248 Two steel grates; two fenders; two sets of fire implements; and a grate, inlaid with brass

THE OAK ANTE-ROOM.

- 249 Two pairs of flowered crimson damask curtains, with gilt cornices and holders
- 250 A steel grate, fender, and fire implements
- 251 A pair of painted and gilt wood stands, of Chinese design—21 *in. wide*; and a larger ditto, similar
- 252 An ebonised show-cabinet, with or-molu borders, and green marble columns at the angles—40 *in. high*, 36 *in. wide*
- 253 A mahogany square table, on octagonal supports—4 *ft. 6 in. square*
- 254 AN ITALIAN MIRROR, in gilt frame boldly carved with Amorini, flowers and scrollwork—6 *ft. 6 in. high*, 4 *ft. 9 in. wide*
- 255 A pair of carved and gilt wood window-cornices—6 *ft. wide*

PICTURE GALLERY.

- 256 A CANOPY OF FLOWERED CRIMSON DAMASK, with appliqué embroidery of the Royal Arms, cypher of George III., crowns and emblems, with a carved and gilt cornice
- 257 An Empire gilt arm-chair, carved with scale-pattern and foliage, the seat and back covered with crimson damask; and three stools en suite

- 258 An oblong centre-table, carved with foliage, and with painted top to represent marble—5 ft. 6 in. wide
- 259 EIGHT GEORGIAN GILT SIDE-TABLES, supported by figures of eagles, and surmounted by veined black marble slabs—5 ft. wide
- 260 Two pairs of crimson baize curtains, with silk braid borders; and seven cornices, en suite
- 261 Seven gilt-wood window-cornices, carved with shells, fleur-de-lys and foliage—6 ft. 9 in. wide
- 262 The red ground carpet, as laid, with a design of cinquefoils and stars—30 yd. long, about 22 ft. 9 in. wide
- 263 A bust of a Bacchante, sculptured in white marble, by J. Clesenger, Rome, 1858

THE OLD STATE BREAKFAST ROOM.

- 264 A SUITE OF FURNITURE, with Chippendale mahogany legs carved with shells and foliage, and frameworks of later date, the seats and backs stuffed, and covered with red canvas with a design of coronets, the Garter motto, &c., consisting of—
 - A settee—7 ft. 6 in. long
 - A couch—6 ft. long
 - Twenty-four arm-chairs
 - Six chairs
- 265 A winged settee, covered with crimson silk damask—41 in. wide
- 266 Four walnut chairs and two arm-chairs, of Queen Anne design, with cabriole legs and club feet, the seats covered with brown leather
- 267 A pair of mahogany tripod fire-screens, with square gilt banners
- 268 A large mahogany fire-screen, with glass panel, the framework boldly carved with shells and foliage—5 ft. 9 in. high, 3 ft. wide
- 269 A circular walnut table, the top formed of a slab of veined black and white marble—30 in. diam.
- 270 A circular table, the top formed of a slab of black marble, painted with infant Bacchanals in colours—36 in. diam.

- 271 A PAIR OF GEORGIAN MIRRORS, in gilt frames carved with lions'-masks, shells and foliage—9 ft. 9 in. high, 5 ft. 6 in. wide
- 272 A LARGE BRONZE CHANDELIER, with vase-shaped centre, and branches for thirty-six lights, surmounted by an eagle, inscribed, "THE GIFT OF JACOB RIDER 1708"—7 ft. 6 in. high
- 273 Three gilt window-cornices, carved with lions'-masks, shells and foliage—8 ft. 3 in. wide—with crimson damask cornices
- 274 A steel fender—5 ft. wide—with set of fire-implements; and a steel dog-grate, of serpentine shape
- 275 The crimson felt surround for the room
- 276 A needlework picture, worked with a girl playing the guitar in coloured wools—26 in. by 20 in.—in gilt frame

OLD STATE MORNING ROOM.

- 277 The red ground carpet, with design of cinquefoils in white, as laid to this and the two adjoining rooms
- 278 TWELVE LOUIS XV. FAUTEUILS, the frameworks gilt and carved with flower-sprays, the seats, loose cushions and backs stuffed, and covered with flowered crimson damask—the frameworks stamped
- 279 A pair of gilt centre ottomans, carved with foliage, stuffed and covered with flowered crimson damask—7 ft. long
- 280 A LOUIS XV. WALNUT SETTEE, carved with sprays of flowers, with shaped back and rounded ends, stuffed and covered with flowered crimson silk damask—11 ft. wide
- 281 A walnut centre-table, carved with foliage, and with mosaic marble top—4 ft. 7 in. wide
- 282 Four oak side-tables, with black and white marble tops—45 in. wide
- 283 Two circular pine tables, carved with foliage, and with spiral legs, the top of one formed of a slab of white marble painted with arms, &c., and the top of the other formed of a slab of veined green marble—33 in. diam.
- 284 A steel dog grate, of serpentine shape; a fender; and set of fire-implements
- 284A A walnut couch, of Empire design, covered with red leather—7 ft. 3 in. wide

OLD STATE DINING ROOM.

- 285 A steel dog grate, of serpentine shape; a steel fender; and set of fire-implements
- 286 Two steel grates; one fender; and a set of fire-implements

OLD STATE ANTE-ROOMS.

- 287 Two pairs of red holland curtains
- 288 Nine Empire mahogany chairs, the backs carved with rosettes, with canework seats and loose cushions covered with red leather
- 289 A Queen Anne gilt-wood chandelier, carved with foliage, and with branches for eight lights

THE BECKFORD LIBRARY.

- 292 An oak print rack, with brass trellis doors on either side, the top covered with green leather—8 *ft.* by 4 *ft.*
- 293 An oak pedestal table, with drawers in the ends, the top covered with green leather—8 *ft.* 5 *in.* wide
- 295 Twenty-four small oblong stools, with fluted ebonised and gilt legs, and stuffed tops covered with red baize—18½ *in.* wide
- 296 A pair of Flemish cabinet-doors, of tortoiseshell and ebony, with moulded borders—24 *in.* by 20 *in.*—17th Century; and a small ebony cornice, carved with a crown and foliage—24 *in.* wide
- 297 Two ebony picture-frames; a plaster bust of Wm. Beckford; and sundries

NEW STATE MORNING ROOM.

- 299 AN AUBUSSON CARPET, woven with the Arms of France, fleur-de-lys, flowers and fruit in red borders—*about 26 ft. by 25 ft.*
- 300 Two pairs of flowered crimson damask curtains and holders
- 301 A brass and steel grate; a fender, en suite, of serpentine shape; a set of fire-implements and dogs; and a brass expanding fire-screen
- 302 A jardinière, carved with foliage, and painted white and gold—*6 ft. wide*

NEW STATE DRAWING ROOM.

- 303 AN AUBUSSON CARPET, woven with the Arms of France, fleur-de-lys, flowers and fruit in red border—*about 29 ft. by 31 ft.*
- 304 A cut-glass and or-molu chandelier, with numerous pendants, fitted for gas
- 305 A pair of large mirrors, in gilt frames, the borders carved with flowers and foliage, and with a coronet at the top—*about 14 ft. high, 6 ft. 6 in. wide*
- 306 A pair of Empire torchères, formed as tripod altars, with hoof supports, painted to represent marble, the stands decorated with gilt laurel festoons in relief—*41 in. high*
- 307 A pair of Japanese bronze bottles, fitted as lights—*15 in. high*
- 308 A gilt tripod table, with circular top of veined yellow marble—*22 in. diam.*
- 309 A circular rose-wood table, on carved tripod and claw feet—*5 ft. diam.*
- 309A A brass and steel fender; a pair of fire-dogs and fire-implements; and a brass expanding fire-screen

NEW STATE MUSIC ROOM.

- 310 AN AUBUSSON CARPET, woven with the Arms of France, fleur-de-lys, flowers and fruit in red border—*about 28 ft. by 25 ft.*
- 311 A pair of crimson damask curtains, with holders

- 312 Four gilt window cornices, carved with oak branches, wreaths of flowers and ribands—7 ft. 6 in. wide
- 313 A suite of gilt furniture, of French design, carved with foliage, the seats and backs stuffed, and covered with flowered silk brocade, consisting of—
 A large settee—9 ft. 6 in. wide
 A couch—6 ft. wide
 Four arm-chairs
 Six chairs
- 314 A gilt mirror—7 ft. 2 in. high, 5 ft. 10 in. wide
- 315 A circular table, with baize-covered top; on mahogany tripod
- 316 An or-molu and steel grate; a ditto fender, of serpentine shape; a set of fire-implements and andirons; and an expanding fire-screen

ANTE-ROOM ADJOINING.

- 317 AN AUBUSSON CARPET, with the crowned initial L, fleur-de-lys, masks and flowers in colours—about 21 ft. by 14 ft.
- 318 Two pairs of crimson silk damask curtains, with holders
- 319 A pair of gilt window cornices, carved with foliage and beading—7 ft. wide
- 319A A large mirror, in gilt frame, surmounted by the Hamilton Arms, and with Saint George and the dragon below
- 319B A steel and brass grate, surmounted by vases

THE TRIBUNE.

- 320 A TURKEY CARPET, with panels of conventional ornament in blue and yellow on red ground—about 32 ft. square
- 321 A MARBLE SIDE-TABLE, with white marble supports carved with dolphins, and top formed of a slab of pink granite—7 ft. 6 in. wide
- 322 A PAIR OF MARBLE TABLES, with supports of veined white marble carved with leafage, surmounted by slabs of black and white marble—7 ft. 6 in. wide
- 323 The Empress Eugénie: a bust in statuary marble, life-size
- 324 Napoleon III.: a bust in statuary marble, life-size, by Patric Park, Manchester, 1855
- 325 A bust of Mr. Brown, in statuary marble, life-size—signed PARK FECIT 1834 "

- 326 The Twelfth Duke of Hamilton and Lord Charles Hamilton: a pair of busts, in white marble, life-size—*signed* DANTON, 1863—the socles carved with the Hamilton Arms, on veined black marble pedestals, with white bases carved with a laurel wreath and rosettes—6 ft. high
- 327 A bust of a lady, her hair dressed in the Empire manner, sculptured in statuary marble, by F. Bosio, on pedestal of veined yellow marble, with white base sculptured with a laurel wreath and rosettes
- 328 A bust of a gentleman, with Classical drapery, life-size, by Thomas Campbell, *Rome*, 1822, on similar pedestal to the preceding
- 329 A bust of a lady, with plaited hair, life-size, on granite pedestal
- 330 Lady Mary Hamilton: a bust—*signed* DANTON, 1863—on socle carved with the Hamilton Arms, and granite pedestal
- 331 An iron fender and set of fire-implements; and four lacquered metal columns, in imitation of marble—27 in. high
- 332 A bronze figure of a greyhound, by A. Jacquemart—24 in. high—on ebonised plinth and wood pedestal

THE STATE DINING ROOM.

- 333 A MARBLE TABLE, with three white marble supports carved with caryatid figures, surmounted by a slab of veined green marble, inlaid with foliage and chequer pattern in mosaic work—12 ft. 5 in. by 5 ft. 6 in.
- 334 A pair of marble side-tables, with white marble supports carved with dolphins and foliage, surmounted by massive granite slabs—7 ft. 5 in. wide
- 336 A pair of alabaster vases and covers, carved with palm leaves, key-pattern and fluting—37 in. high—glass shades and stands
- 337 FOUR EMPIRE TORCHÈRES, carved with caryatid Egyptian figures, painted black and partly gilt—6 ft. 5 in. high
- 338 A pair of gilt torchères, carved as the stems of palm-trees, supporting Classical vases—5 ft. high

- 339 A set of thirty-six chairs, of Italian design, with gilt scroll legs and X-shaped stretchers, the seats and backs covered with red velvet bordered with metal-gilt Cherubs' heads
- 340 A mahogany extending dining-table—31 *ft. long*; and stand for extra leaves
- 341 An or-molu chandelier, of Louis XIV. design, with branches for twelve lights

THE HAMILTON LIBRARY.

- 344 The red ground carpet, with a design of cinquefoils in black and white—*about 24 ft. by 34 ft.*
- 345 Twelve chairs and a fire-screen, with black and gold frameworks carved with beading, the seats and backs stuffed, and covered with flowered crimson silk damask
- 346 A FLEMISH LARGE BRASS CHANDELIER, with vase-shaped centre, and branches for sixteen lights
- 347 A mahogany square table, on scroll supports carved with foliage—5 *ft. square*
- 348 A steel grate; a ditto fender—5 *ft. 3 in. wide*; and set of fire-implements
- 349 Three large mirrors, in gilt frames carved with shells, foliage and gadrooning—8 *ft. 6 in. high, 6 ft. wide*
- 349A A pair of Dresden porcelain candelabra—24 *in. high*; a pair of biscuit figures—13 *in. high*; another—18 *in. high*; a bust; and glass shades
- 349B A pair of gilt semi-circular console-tables, of Adam design, with white marble tops—6 *ft. wide*
- 349C A ram's head, on casters, fitted with two silver-gilt boxes, &c.

ANTE-ROOM.

- 350 A red ground carpet, with cinquefoils in black and white—*about 24 ft. square*
- 351 Seven window-cornices, of flowered crimson silk damask
- 352 A gilt-wood chandelier, of Queen Anne design, carved with foliage, with branches for eight lights—25 *in. high*
- 353 A steel grate; a ditto fender—5 *ft. 3 in. wide*; a set of fire-implements; and an iron lamp-stand

- 354 A gilt side-table, with frieze of honeysuckle ornament, surmounted by a dove-grey marble slab—4 ft. 5 in. wide
- 355 A pair of columns, of veined brown marble—6 ft. 6 in. high—on square pedestals of black marble
- 356 An Empire mahogany commode, with folding doors enclosing trays, mounted with or-molu appliqués—3 ft. 6 in. high, 4 ft. 9 in. wide
- 357 A marqueterie cabinet, inlaid with a vase of flowers in coloured woods and ivory, with glazed doors at the sides and giallo marble top—4 ft. high, 5 ft. 9 in. wide
- 358 A gilt three-leaf fire-screen, with red silk panels
- 358A A pair of biscuit figures; and three others

THE BLACK MARBLE STAIRCASE.

- 359 A cylindrical column, of veined pink and white marble—7 ft. 9 in. high
- 360 Seven wood torchères, carved with fluting, and painted black—6 ft. 6 in. high; and three plaster statuettes—4 ft. high—on black marble pedestals

THE MARBLE HALL.

- 361 A SUITE OF EMPIRE MAHOGANY FURNITURE, carved with dolphins, leopards' heads, festoons and ribands, the seats stuffed, and covered with red leather, consisting of four couches and ten arm-chairs
- 362 Alexander Douglas Hamilton: a bronze bust of heroic size, by Thomas Campbell, 1839, on pedestal of black marble
- 363 A smaller bust of the same, by Thomas Campbell, 1823, life-size
- 364 Four alabaster vases and covers, carved with fluting and foliage—34 in. high—glass shades and stands
- 365 Two grates; two steel fenders—7 ft. 2 in. wide; and two sets of fire-implements

FIRST-FLOOR CORRIDOR FROM OAK STAIRCASE.

- 366 Four plaster statuettes—4 ft. high; and two scagliola pedestals

(NOV. 12)

C.

BEDROOM 4.

- 367 A mahogany toilet-glass; a towel-horse; and a deal table
- 368 The green ground carpet, as laid; and a pair of red canvas curtains and cornice

BEDROOM 5.

- 369 An old English small square mahogany wash-stand; and two chairs, with rail backs
- 370 A mahogany toilet-glass; two towel-horses; the carpet as laid; and two stools

BEDROOM 7.

- 371 An iron bedstead and bedding
- 372 The carpet as laid; a hearthrug; a wire fender; a set of fire-implements; and a painted towel-horse
- 373 A mahogany toilet-glass; a ditto wash-stand; a toilet-table; a mahogany chest of drawers; and a chair, with fluted mahogany legs

BEDROOM 8.

- 375 A mahogany chest of four drawers—42 *in. wide*; a folding washstand; a chair, with rail back; and a deal table
- 376 A mahogany toilet-glass; a deal table; a painted towel-horse; and a wire fire-guard
- 377 The red ground carpet as laid; a pair of crimson damask curtains; and a hearth-rug

BEDROOM 9.

- 378 A painted iron bedstead and bedding; and two hip-baths
- 379 A mahogany washstand; a chair, with rail back; a toilet-glass; a wire fire-guard; the drugget; and a hearth-rug

STORE ROOM, FIRST FLOOR.

- 380 Two old English mahogany knife-boxes
- 381 A Chippendale mahogany pole fire-screen; and an Empire chair, with metal-gilt mounts
- 382 A Jacobean oak table, with turned legs—3 ft. 10 in. wide
- 383 Nine japanned baths; a metal-bound deal chest; and sundries

BEDROOM 13.

- 384 A folding iron bedsteads; a deal table; a folding wash-stand; a toilet-mirror; and a grained table

BEDROOM 15.

- 385 Two iron bedsteads and bedding
- 386 A pair of prints of coursing subjects; and eight others, in maple frames
- 387 The Duke of Wellington's funeral car; and Views of Paris, &c., in colours, in maple frames
- 388 Napoleon III.; and nine other portraits, &c., in maple frames
- 389 Twelve portraits, in maple frames
- 390 Two portraits of Popes; and ten others, in maple frames

End of Second Day's Sale

Third Day's Sale.

On FRIDAY, NOVEMBER 14, 1919,

AT ONE O'CLOCK PRECISELY.

GUN ROOM.

- 392 A double-barrelled gun, by Findlay
- 393 A pair of single-barrelled hammer-guns, by Gastinne Renette,
-Paris, with engraved mounts
- 394 A single-barrelled gun, by J. Purdey, *London*
- 395 A pair of single-barrelled guns, by J. Purdey, *London*, with
ebonised stocks
- 396 A double-barrelled gun, by Eadon, with watered barrels and
walnut stock
- 398 A single-barrelled gun, by F. P. G. Rennett, *Paris*
- 399 A single-barrelled gun, by J. Purdey, *London*; and a double-
barrelled gun—*imperfect*
- 400 A rifle, by Siber, *Lausanne*, with octagonal barrel
- 401 A double-barrelled gun, by John Finlay, *Paisley*, with
watered barrels
- 402 A rifle, by Manton, with octagonal barrel
- 403 A single-barrelled gun, by Findlay, *Paisley*, with damascened
barrel
- 405 A single-barrelled gun, by J. Purdey, *London*, with watered
barrel and ebonised stock; and a smaller ditto, nearly
similar

- 408 A double-barrelled gun, by Alexander Wilson, *London*, with watered barrels
- 410 A single-barrelled gun, by Alexander Martin, *Glasgow*, with watered barrel; and one, by Ingram Hamilton
- 411 A single-barrelled gun, by J. Purdey, *London*
- 414 Another, by J. Purdey, *London*
- 414A Nineteen wood gun-cases; eight leather covers; a long leather gun-bag; and two wood pistol-cases
- 415 A stuffed hare and leveret; two rabbits; four pheasants; a grouse; two owls; and two others
- 418 A grained cabinet; a deal table; two deal boxes; an open stand, with shelves; and a walnut chest
- 419 Five gilt picture-frames; a piece of gilt carving; four pictures, on panels; and two, on canvas
- 420 A glazed case—2 ft. 8 in. high, 3 ft. wide; and a pine chest—6 ft. 3 in. wide

STORE ROOM.

- 421 An arm-chair, with stuffed seat and back
- 422 Six Chippendale mahogany chairs, with pierced ladder-pattern backs
- 423 A painted cupboard—4 ft. wide; a ditto chest of drawers; and two portable iron plate-heaters

PASSAGE.

- 424 The head of a wild bull, from Cadzow, 1912
- 425 Two ditto
- 426 Two ditto

- 427 Three mahogany tables; a butler's tray; and two wagons
- 428 Ten deal and painted tables
- 429 A range of painted cupboards, with panelled doors—9 *ft.*
3 *in.* *high*, 19 *ft.* *wide*
- 430 A smaller ditto, with latticework cornice—8 *ft.* *high*, 9 *ft.*
wide

STILL ROOM.

- 431 Five old English chairs, with rail backs; a mahogany towel-horse; and two beech chairs

STEWARD'S ROOM.

- 432 A Jacobean oak table, with massive turned baluster-shaped legs—9 *ft.* 3 *in.* *wide*
- 433 An old English oval mahogany dining-table—6 *ft.* 6 *in.* *long*
- 434 Three painted iron bedsteads; two mahogany chairs; two pairs of red linen curtains; two bronze tea-urns; and an iron figure of an Angel

LARGE KITCHEN.

- 435 A deal table—12 *ft.* *long*; and one—8 *ft.* 6 *in.* *long*
- 436 A painted ice-safe—5 *ft.* 3 *in.* *wide*; and an iron safe—6 *ft.*
10 *in.* *wide*
- 437 Three oak tables—3 *ft.* 3 *in.* *wide*; and six benches
- 438 Six large copper saucepans; and various smaller ditto covers, moulds, &c.
- 439 Two grained dressers; a ditto chest; a painted cupboard; two deal tables; a small mortar-stand; and five chopping-blocks
- 440 Sundry household china
- 440a A large grained table—7 *ft.* 2 *in.* *long*; and an oak table

THE BUTCHERY.

- 441 A deal table—7 *ft.* 9 *in.* long; a chopping-block; three chairs, with rail backs; and a weighing-machine and set of weights

STILL ROOM.

- 442 A painted table, with deal top—7 *ft.* long; a painted dresser, with deal top—8 *ft.* long; and a cupboard

SMALL SITTING ROOM.

- 443 An old English arm-chair, with oval back and painted arms and legs; a mahogany table—35 *in.* wide; and a Sheraton oval mahogany toilet-glass
- 444 A Chippendale mahogany table, on club feet; a walnut arm-chair; two chairs; a mahogany couch; the linoleum; a steel fender; and fire-irons
- 445 A painted deal cupboard, with latticework corners—5 *ft.* 3 *in.* wide

KITCHEN.

- 446 A JACOBEOAN HEXAGONAL OAK TABLE, with turned legs and circular deal top—6 *ft.* wide
- 447 A Hepplewhite mahogany arm-chair, with cane seat and rounded back
- 448 Two deal tables; a dresser; and two chairs, with rail backs
- 449 Twelve prints of the Virgin and Child, portraits, &c., in maple frames
- 450 The Duke and Duchess of Hamilton; and fourteen other portraits, &c., in maple frames
- 451 Twenty portraits, &c., in maple frames

- 452 Sixteen ditto, in gilt frames
- 453 Curling, and four others; and the keys, in gilt frames
- 454 Fourteen prints of landscapes, &c., in mahogany frames
- 455 Eighteen prints, &c., in gilt frames
- 456 Sixteen Biblical subjects, &c., in black frames
- 457 A similar lot
- 457A A similar lot
- 457B Views of Venice, &c.
- 457C Fifteen frames

CORRIDOR AND STILL ROOM.

- 458 Two mahogany tables, one with tray-top; and linoleum, as laid to corridor

MAIDS' SITTING ROOM.

- 459 A grained dresser; a pine table; seven chairs; and a wicker arm-chair

BUTLER'S PANTRY.

- 460 Sundry glass decanters, finger bowls, &c.
- 461 A similar lot
- 462 An oak table, with folding leaves; a grained table, with deal top—11 ft. 6 in. long; and one—5 ft. long

SECOND FLOOR.

DUKE OF NEWCASTLE'S BEDROOM.

- 463 A CHIPPENDALE BEDSTEAD, with mahogany posts and claw feet, the back and canopy covered with flowered pink silk brocade, and four curtains, en suite, with two mattresses, feather bed, bolster and pillows
- 464 A mahogany small square wash-stand and ware; three stools; and a screen
- 465 A pair of window-cornices, covered with pink and white brocade—7 ft. 6 in. wide; and a cornice, covered with crimson damask
- 466 A pair of mirrors, in gilt frames with laurel-wreath border—7 ft. high, 4 ft. 10 in. wide

EBONY ROOM.

- 467 An Indo-Portuguese bedstead, of ebony carved with flowers, decorated with flowers and vases in ivory and mother-o'-pearl, and overlaid with plaques and borders of tortoise-shell; and bedding
- 468 A child's cradle, en suite
- 469 An ebonised settee, covered with flowered crimson damask—7 ft. 6 in. wide; a cushion, en suite; and a circular ebonised table, on claw feet—51 in. diam.
- 470 An ebonised chest, fitted with ten drawers and a cupboard—6 ft. 9 in. wide; two ditto bedside cupboards; a wash-stand; a toilet-table; three other pieces; two window-cornices; and a pair of towel-horses
- 471 A pair of flowered red silk brocade curtains; two small strips of similar material; a red cloth table-cover; and a mahogany toilet-glass

CHINTZ BEDROOMS.

- 472 A mahogany toilet-glass; and a walnut toilet-table, with marble top
- 473 A child's brass bedstead; and a painted iron bedstead
- 474 A brass bedstead; and a child's ditto
- 475 A pair of gilt mirrors, with laurel-wreath borders—50 *in.* high, 69 *in.* wide

NURSERY BEDROOMS.

BEDROOM 1.

- 476 Four oak nursery bedsteads
- 477 Four Chippendale mahogany chairs, with fluted legs, stuffed seats and backs
- 478 An arm-chair, with stuffed seat and back; a mahogany bedside cupboard; a wire fender; a pair of red canvas curtains; and three cornices
- 479 A mirror, in gilt frame with laurel-wreath border—6 *ft.* 9 *in.* high, 4 *ft.* 9 *in.* wide

BEDROOM 3.

- 480 A brass and iron child's bedstead and bedding; two mahogany washstands; two towel-horses; two chairs; a bedside cupboard; a stained chest of drawers; a wire fender; and two mahogany window-cornices

BEDROOMS 4 AND 5.

- 481 A mahogany washstand, with marble top; two towel-horses; a fire-screen; a bedside cupboard; and a toilet-glass
- 482 Two mirrors, in gilt frames; two wire fire-guards; a carpet, as laid in corridor; and four mahogany cornices

GALLERY BEDROOMS.

- 484 A mahogany toilet-table, with folding top; and a mahogany toilet-glass
- 485 A mahogany wardrobe—8 ft. 3 in. high, 8 ft. wide
- 486 A mahogany toilet-glass; a towel-horse; a mahogany and or-molu bed-canopy; and a mahogany bedside-cupboard
- 487 Seven gilt window cornices, with chintz hangings; and a mirror, in gilt frame with laurel-wreath border—6 ft. high, 4 ft. 3 in. wide
- 488 Two mahogany four-post bedsteads, with fluted pillars, and bedding
- 489 Eight water-cans; and three plaster busts
- 490 Five steel fenders

THE PRINCESS'S SUITE.

- 491 A pair of flowered crimson silk damask curtains, with cornice and holders; and a gilt window cornice
- 492 Two pairs of similar curtains, with cornices, holders and gilt cornices
- 495 An arm-chair, covered with red silk damask; and four gilt chairs, carved with shells, the seats and backs covered with similar damask
- 496 A mahogany folding wash-stand—21 in. wide; and an Empire couch, inlaid with brass, covered with flowered crimson silk brocade, with cushions and bolster en suite
- 497 Two gilt chairs, covered with green brocade; a chair, covered with blue velvet; and a fire-screen
- 498 Five gilt window cornices, with green brocade hangings; and one ditto, with red damask hangings
- 499 An Empire mahogany bedstead, with gilt winged figures at the corners, and bedding

- 500 SIX LOUIS XV. GILT FAUTEUILS, carved with flowers, the seats, cushions and backs covered with flowered crimson silk damask
- 501 A satin-wood wash-stand, with marble top; a chest of four drawers; a bed-side cupboard; and a towel-horse
- 502 A circular mahogany table—42 *in. diam.*; and an Italian toilet-mirror, in scroll frame, painted white and gold
- 503 A mirror, in gilt frame with foliage border—8 *ft. high*, 5 *ft. 3 in. wide*; and one, in gilt frame carved with flowers, fruit and scrollwork—8 *ft. high*, 5 *ft. 6 in. wide*
- 504 A mirror, in gilt frame with laurel-wreath borders—6 *ft. 9 in. high*, 5 *ft. wide*
- 505 A pair of glazed gilt show-cabinets—6 *ft. 7 in. high*, 5 *ft. 2 in. wide*
- 506 Eight Hepplewhite arm-chairs, with stuffed seats, and oval backs painted with garlands of flowers in blue and green
- 507 An old English mahogany sofa, with stuffed seat, back and ends—6 *ft. 6 in. wide*

CORRIDOR TO PRINCESS'S SUITE.

- 508 The red ground carpet, as laid; and three pine window-seats, with stuffed tops
- 509 A winged mahogany bookcase, enclosed by glazed doors, with cupboards below—9 *ft. 3 in. high*, 9 *ft. 9 in. wide*
- 510 Three gasoliers; a pair of red cloth curtains; a plaster bust; and a hip-bath

SECOND-FLOOR LANDING.

- 511 Hebe: a statue, in white marble, by C. Lofsch, *Rome*, 1859.—6 *ft. high*—on marble pedestal, with bas-relief in front

NEW WING BEDROOMS.

- 512 A bedstead, with fluted pine posts, red watered silk head and foot, and red and gold brocade curtains, cornice, &c., and bedding
- 513 A ditto bedstead, with mahogany posts
- 514 Six gilt window-cornices, with red and gold brocade hangings
- 515 Two steel grates, inlaid with brass; three fenders; and fire-
implements
- 516 A SUITE OF LOUIS XV. GILT FURNITURE, carved with
flowers, the seats and backs covered with flowered red
and gold brocade, consisting of ten fauteuils and three
window-seats
- 517 A pair of arm-chairs, with gilt fluted legs, the seats, backs,
and arms stuffed, and covered with crimson and gold
brocade
- 518 A sofa, with gilt legs, stuffed seat and back—7 ft. 9 in. wide;
two bolsters; and a cushion
- 519 A gilt stool, with red silk top; and two mirrors, in gilt
frames
- 520 A mahogany square table; two mahogany toilet-glasses; a
deal toilet-table; and two mahogany bedside cupboards
- 520A A range of cupboards—9 ft. 10 in. high, 10 ft. wide

PRINCESS'S MAIDS' ATTIC BEDROOMS.

No. 1.

- 521 Two wood bedsteads, and mattresses; the carpet, as laid;
and a grained chest of drawers
- 522 Three small mahogany wash-stands; and a mahogany
towel-horse

No. 2.

- 523 A carved wood figure of an eagle—30 *in. high*; a brass parrot-cage; and sundries

No. 3.

- 524 Two mahogany toilet-mirrors, with bevelled edges; and two Sheraton oval mahogany toilet-mirrors
- 525 A painted chest of drawers; an oval mahogany table; the matting; and a mahogany towel-horse

No. 5.

- 526 A mahogany camp-bedstead, and bedding; a mahogany bedstead, and bedding; two wash-stands, with marble tops; and the matting

No. 6.

- 527 Two iron bedsteads, and bedding; and a deal hanging wardrobe

No. 7.

- 528 A SHERATON SEMICIRCULAR MAHOGANY TOILET-TABLE, with folding top, toilet-mirror in the centre, and a drawer and cupboards below, the borders banded with rose-wood—4 *ft. 9 in. wide*
- 529 Two iron bedsteads, and bedding; a mahogany wash-stand and toilet-table; a small toilet-glass; a towel-horse; the matting; and a japanned coal-box

Nos. 8 and 9.

- 530 A mahogany circular washstand; towel-horse; deal table; folding camp bedstead; the matting; two fenders; and the linoleum in lavatories

Nos. 10 and 11.

- 531 An iron bedstead, and bedding; a painted bedside stool; the matting; a towel-horse; and a fender
- 531A A circular wash-stand; various bedroom ware and water-cans; and two grained chests—7 *ft. 3 in. wide*
- 531B A large grained chest—12 *ft. 5 in. long*; and a smaller ditto—4 *ft. long*

MAIDS' ATTIC BEDROOMS.

No. 2.

- 532 Two iron bedsteads, and bedding; a grained chest of drawers; two small mahogany washstands; and two toilet-glasses

No. 3.

- 533 Two iron bedsteads, and bedding; a wire fender; a towel-horse; and two mats
- 534 A mahogany chest of drawers; a stained ditto; two washstands; an X-shaped mahogany arm-chair; three other chairs; a deal table; and two mahogany toilet-glasses

No. 4.

- 535 Two iron bedsteads, and bedding; and four mats
- 536 Two mahogany toilet-glasses; two stained chests of drawers; a deal table; a wire fender; and a set of fire-implements
- 537 Two small mahogany washstands; two mahogany stools; a chair, with rail-back; and a painted towel-horse

No. 5.

- 538 An old English semicircular toilet-table, with mirror—
4 ft. 9 in. wide; and a wood camp-bedstead and bedding

No. 6.

- 539 Two iron bedsteads and bedding; the carpet as laid; and a wire fender
- 540 A mahogany toilet-glass; two small square washstands; and two chairs

No. 7.

- 541 A grained wardrobe; and a small mahogany washstand

No. 8.

- 542 Two painted iron bedsteads and bedding; and two fenders
- 545 A mahogany toilet-glass; two deal tables; a towel-horse; two chairs; a wire fender and fire-irons; and the carpet as laid

No. 9.

- 546 A pair of old English painted semi-circular toilet-tables, with folding tops, mirrors at the back and cupboards below—
4 ft. 9 in. wide
- 547 A mahogany small square washstand; a fire-screen; and a semi-circular painted table
- 548 An iron bedstead and bedding; and two wire fenders

No. 10.

- 549 Two wood camp bedsteads and bedding; a mahogany washstand; a toilet-glass; the carpet; and a wire fender
- 551 An oak linen-chest, on stand—*4 ft. wide*; and one other

MEN'S ATTICS.

No. 1.

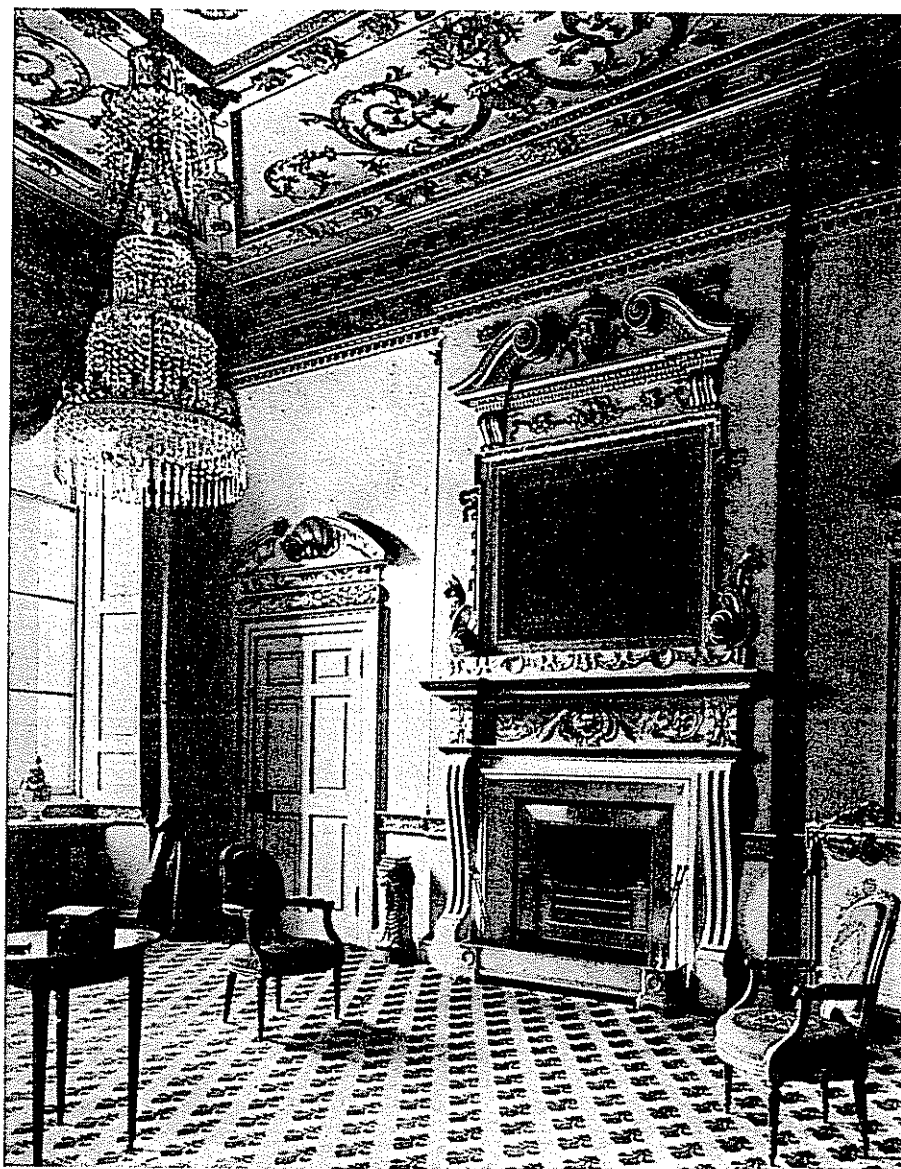
- 552 Two small mahogany wash-stands; a boot-rest; a deal table; a chest of drawers; three mattresses; and three feather beds

No. 2.

- 553 Two iron bedsteads, and bedding; a small mahogany washstand; and two wire fenders

No. 3.

- 554 A wood camp bedstead; a deal chest of drawers; two ditto tables; and a small mahogany toilet-glass



557—THE DUCHESS' SUITE OF ROOMS.

No. 4.

- 556 A wood camp bedstead, and bedding; a mahogany wash-stand; a deal chest of drawers; two tables; and a small mahogany toilet-table
- 556A A pair of mahogany small wash-stands; a painted bedside cupboard; a ditto towel-horse; and a fender

WOODWORK AND FITTINGS.

The following lots cannot be removed until Monday, November 24, and must be finally cleared by January 1, 1920.

The rooms were illustrated in "Country Life," June 7 and June 14, 1919.

- 557 THE GEORGE I. WOODWORK AND PANELLING OF THE DUCHESS'S SUITE OF ROOMS: the chimney-pieces, over-doors and mouldings, carved with trophies, vases, festoons of flowers, shells and scrollwork, painted white and gold, the chief panels mounted with blue silk brocade; two over-doors painted with landscapes; one chimney-piece set with a mosaic plaque; and the decorated plaster ceilings, comprising—
- The boudoir—22 ft. 10 in. by 22 ft., 16 ft. high
 The bedroom—21 ft. 6 in. square
 The ante-room—13 ft. 9 in. by 14 ft. 6 in.
 The dressing-room—13 ft. 6 in. by 11 ft. 4 in.

See Illustrations

- 558 THE OAK PANELLING OF THE MUSIC ROOM, leading to the Picture Gallery, with raised rectangular mouldings, and chimney-piece boldly carved with flowers, fruit, drapery festoons, and the Hamilton Arms—16 ft. high, 22 ft. by 26 ft.—late 17th Century
- 559 THE OAK PANELLING OF THE PICTURE GALLERY, comprising large raised panels with rectangular mouldings, and Corinthian pilasters, having a range of window-openings along one side—14 ft. high, 120 ft. by 21 ft. 9 in.—late 17th Century

560 A pair of black marble chimney-pieces, carved with oak foliage, acorns, and acanthus leaves, in the Picture Gallery; and two steel grates, fenders, and one set of fire-implements

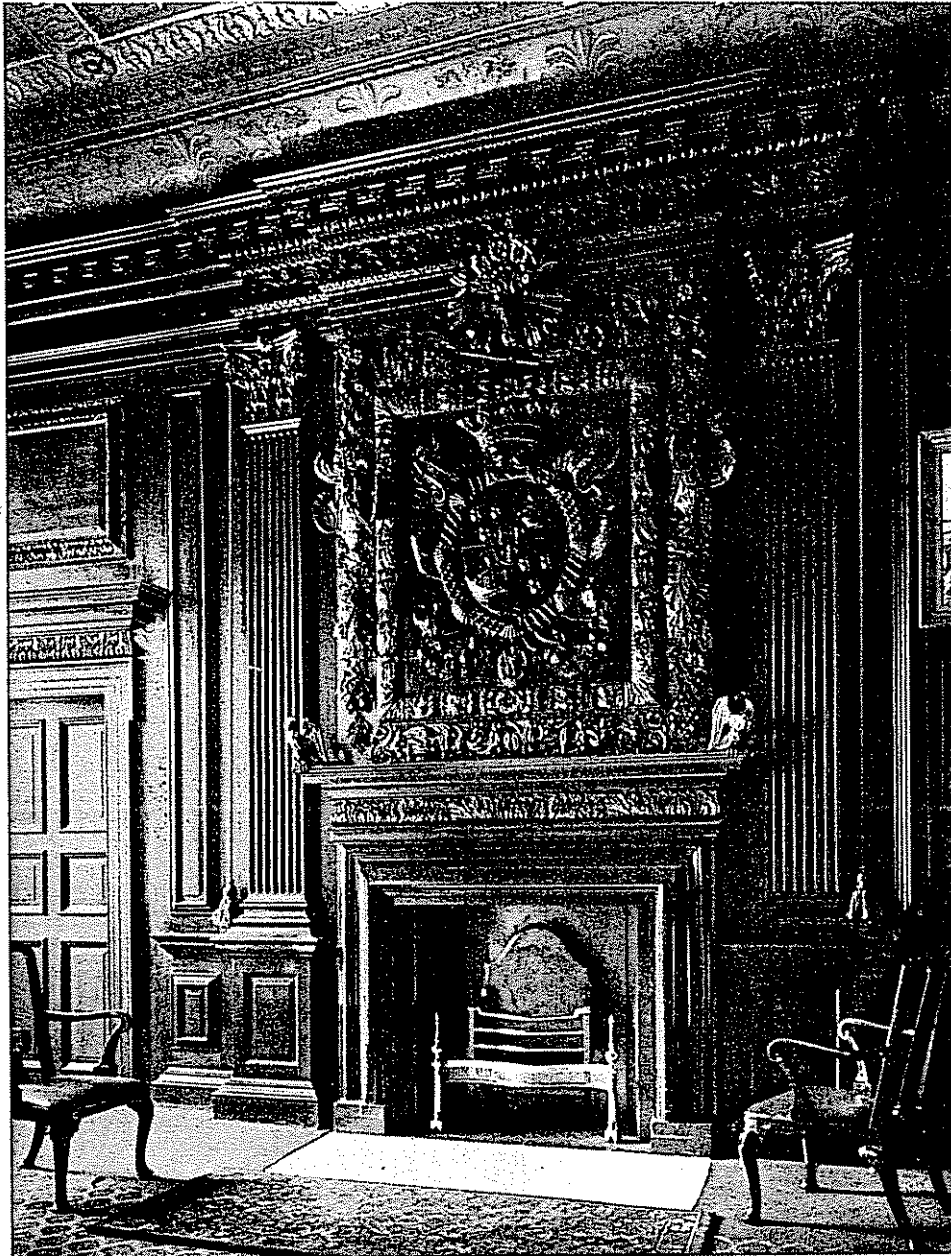
561 THE WOODWORK AND PANELLING OF THE OLD STATE BREAKFAST ROOM, with carved foliage borders to the over-door panels and chimney-piece, boldly carved with the Hamilton Arms, trophies, flowers, fruit and eagles, and with black marble chimney lining—15 ft. 6 in. high, 36 ft. by 22 ft.—late 17th Century

See Illustration

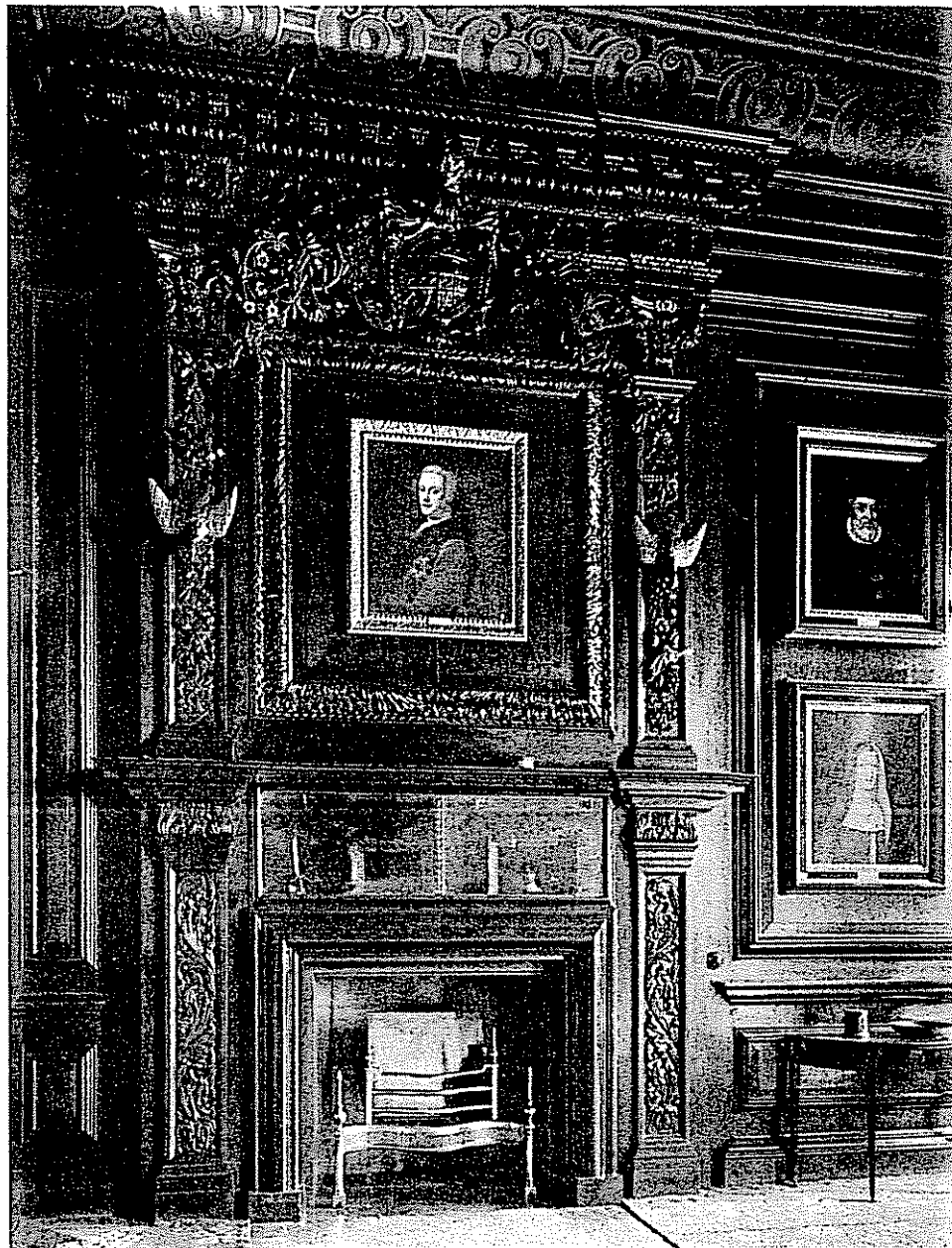
562 THE SIMILAR WOODWORK OF THE MORNING ROOM—15 ft. 6 in. high, 22 ft. 9 in. by 22 ft.

563 A black marble chimney-piece, carved with acanthus foliage, in the Morning Room

MEAL room



561—THE OLD STATE BREAKFAST-ROOM.



564--THE OLD STATE DINING-ROOM.

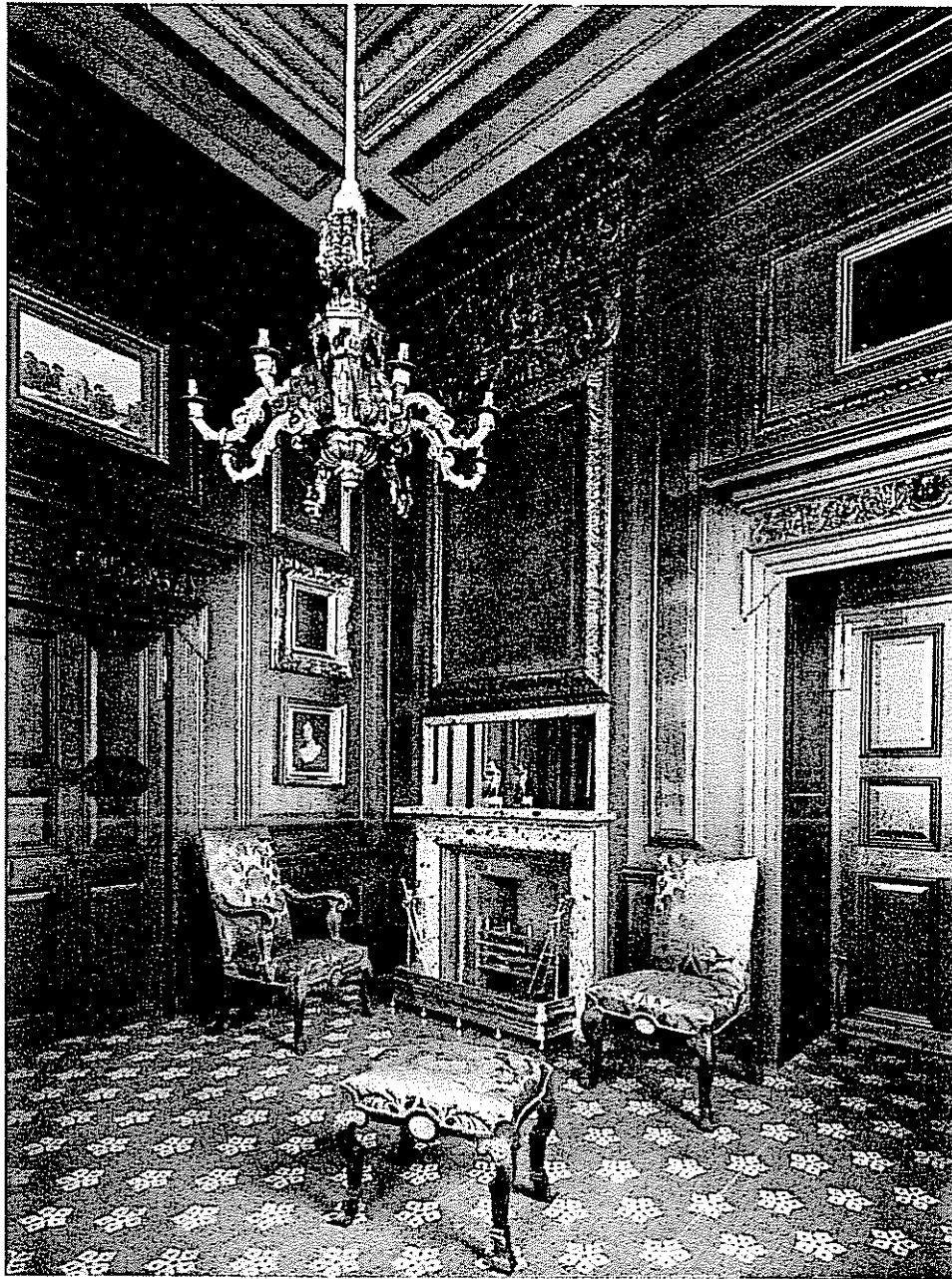
564 THE PANELLING OF THE OLD STATE DINING ROOM, with carved foliage borders to the overdoors and chimney panel, the latter surmounted by the Hamilton Arms, garlands of flowers, fruit and birds, with black marble chimney lining and bevelled glass mirror—15 ft. 6 in. high, 22 ft. square

See Illustration

- 565 THE OAK PANELLING OF THE TWO OLD STATE ANTE-ROOMS, with raised rectangular panels, the borders of one room carved with Amorini, a coronet and foliage, the other plain, with veined green and yellow marble chimney linings—15 ft. 6 in. high—one room, 15 ft. by 13 ft. 9 in., the other 13 ft. by 11 ft. 6 in.—late 17th Century

See Illustrations

- 566 THE WHITE MARBLE CHIMNEY-PIECE, in the State Dining Room, boldly carved with a basket and festoons of fruit, female busts and acanthus foliage—9 ft. wide, 6 ft. high; the steel grate, chimney lining, fender, and set of fire-implements
- 567 THE WHITE MARBLE CHIMNEY-PIECE, in the New State Ante-Room, carved with a vase and swags of fruit supported by children
- 568 THE WHITE MARBLE CHIMNEY-PIECE, in the Princess's Room on the second floor; with Georgian overmantle carved with fruit and painted white and gold; and a steel grate



565—ONE OF THE OLD STATE ANTE-ROOMS.



569—THE CHARLES II BALUSTRADE.

- 569 THE CHARLES II. OAK BALUSTRADE, to the staircase leading to the old portion of the Palace, boldly carved with Amorini, the monogram AW, unicorns, and a coronet among arabesque foliage, consisting of seven sloping flights—*each about 8 ft. long*—and two straight lengths of balustrade, and a plain panelled dado

See Illustration

- 570 THE BLACK MARBLE STAIRCASE, built by the Tenth Duke of Hamilton, with massive balustrade, supported by rectangular banisters carved with acanthus foliage, comprising a double flight of twenty-five steps, and a gallery 40 ft. wide, the latter supported by bronze figures of Atlas; and three short lengths of similar balustrade to balcony

- 571 THE MARBLE PAVEMENT, of the marble hall, with a design of chequer pattern in black, white and yellow marble, with black surround—*about 40 ft. 10 in. by 35 ft. 3 in.*

- 572 THE SIMILAR PAVEMENT, at the foot of the marble staircase, with chequer design in key-pattern border—*about 38 ft. 3 in. by 24 ft. 8 in.*; and the similar pavement, in the passage on the first floor—*about 37 ft. by 7 ft.*

FINIS



THE DiCAMILLO COMPANION
To British & Irish Country Houses